

Holistic Leadership Triad Model (Rahman, 2026)

An integrative framework for awareness, ethics, and action.

Introduction

Leadership is often understood through what is visible — decisions, actions, and outcomes.

However, effective leadership begins long before it is seen.

It begins within.

The **Holistic Leadership Triad Model (Rahman, 2026)** presents leadership as the integration of three interdependent domains:

- Inner Awareness
- Ethical Direction
- Adaptive Impact

These domains are connected through a central mechanism of alignment referred to as **The Golden Thread**.

Together, they form a structured and practical framework for understanding how leadership is shaped, expressed, and experienced.

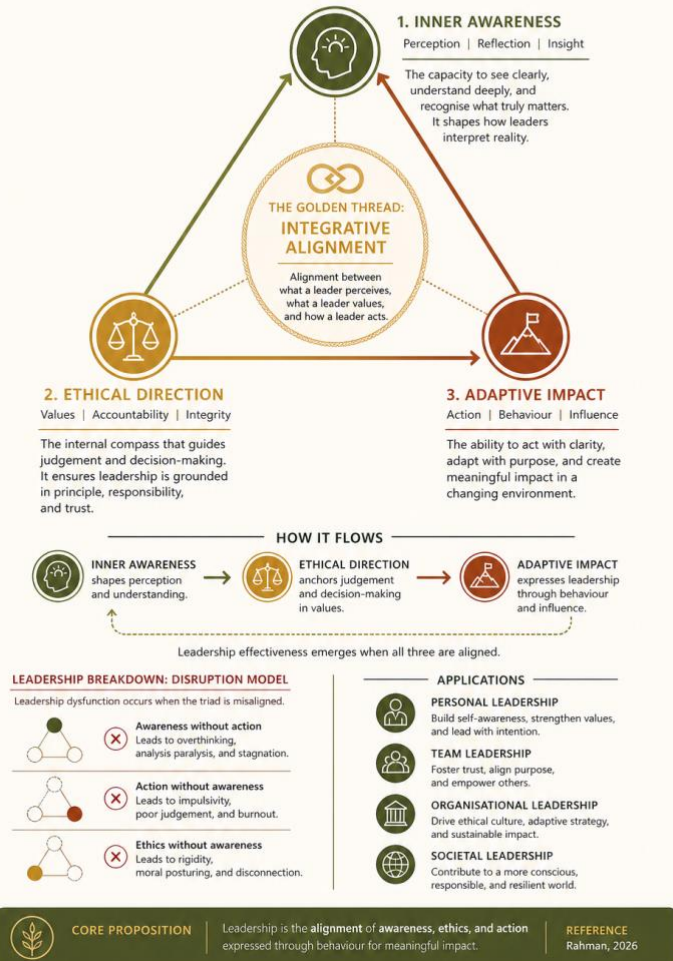
The Model

The Holistic Leadership Triad Model

(Rahman, 2026)

AN INTEGRATIVE FRAMEWORK FOR LEADERSHIP EFFECTIVENESS

Leadership effectiveness emerges from the alignment of awareness, ethics, and action.



Inner Awareness

Inner Awareness refers to how leaders perceive, interpret, and understand both their internal and external environments.

It includes self-awareness, reflection, perception, and recognition of patterns and assumptions.

Leaders do not respond to reality as it is, but to how they perceive it.

Without awareness, leadership becomes reactive rather than intentional.

Ethical Direction

Ethical Direction represents the values, principles, and accountability that guide leadership decisions.

It includes responsibility, integrity, self-correction, and alignment with values.

Leadership without ethical direction risks becoming inconsistent or driven by external pressures rather than internal clarity.

Ethical leadership begins with accountability to oneself.

Adaptive Impact

Adaptive Impact is the outward expression of leadership through behaviour, decisions, and influence.

It includes action, consistency, presence, and impact on others.

This is where leadership becomes visible.

However, action without awareness and ethical grounding can lead to ineffective or misaligned outcomes.

The Golden Thread: Integrative Alignment

At the centre of the model is **The Golden Thread** — the alignment between:

- what a leader perceives
- what a leader values
- how a leader acts

Leadership effectiveness is not determined by these elements individually, but by the degree of alignment between them.

When Alignment Is Missing

Leadership challenges often arise when one or more elements operate in isolation:

- Awareness without action leads to stagnation
- Action without awareness leads to poor judgement
- Ethics without awareness leads to rigid or performative leadership

Sustainable leadership requires continuous alignment across all three domains.

Connection to My Work

This model reflects themes explored across my published work:

Core works:

- *Illuminated Souls* — awareness, perception, and how we see
- *The Relevance of At-Tawbah* — accountability, responsibility, and ethical direction
- *The Fearless Entrepreneur: Transforming Anxiety into Action* — action, courage, and behavioural impact

Supporting works:

- *Poems From the Heart* — reflective insight and emotional awareness
- *Smart Selling: Harnessing AI for E-commerce Success* — practical application of decision-making and adaptive impact in a digital context

Together, these works explore leadership as both an internal and external process, connecting reflective awareness with real-world application.

Why This Matters

In complex and fast-moving environments, leaders are required to navigate uncertainty, make decisions under pressure, and maintain trust and credibility.

The Holistic Leadership Triad Model provides a structured way to understand and develop leadership that is:

- intentional
- aligned
- ethically grounded
- behaviourally effective

Core Principle

Leadership is the alignment of awareness, ethics, and action expressed through behaviour.

Author

Nargis Rahman
Writing as Zaytoona Nur

Civil Servant • Author • Thought Leader